



steeper
ENERGY

Hydrofaction®

Advanced Biofuels Technology
Ready for Commercial Deployment

2023

“The information provided in this presentation is for general informational purposes only and no securities are being offered as part of this presentation. This presentation also contains information that was prepared by or obtained from third parties. While Steeper Energy APS (“Steeper”) believes such information to be reliable, Steeper has not independently verified any of the information prepared by or obtained from third parties. Steeper makes no representation or warranty as to the accuracy or completeness of the information and shall not have any liability for any representations (expressed or implied) regarding information contained in, or for any omissions from, this information.”



A global leader
in converting
sustainable biomass
to drop-in
advanced biofuels

Danish-Canadian company with offices in Calgary, Canada and locations in Denmark

Hydrofaction[®] biocrude upgrading facility in Calgary and demonstration facility in Tofte, Norway

Proven & highly optimized hydrothermal liquefaction (HTL) process called Hydrofaction[®]

High conversion rate of low-value biomass to biocrude, upgradable to advanced biofuels and chemicals at existing refineries

Significantly **reduces carbon intensity** of transport fuels (diesel, jet, marine) when compared to fossil fuels

Hydrofaction[®] can process many different feedstocks, but Steeper Energy is focused on the conversion of **forestry and agricultural residues**

Hydrofaction[®] is a cost-effective, low carbon intensity, fossil fuel alternative process

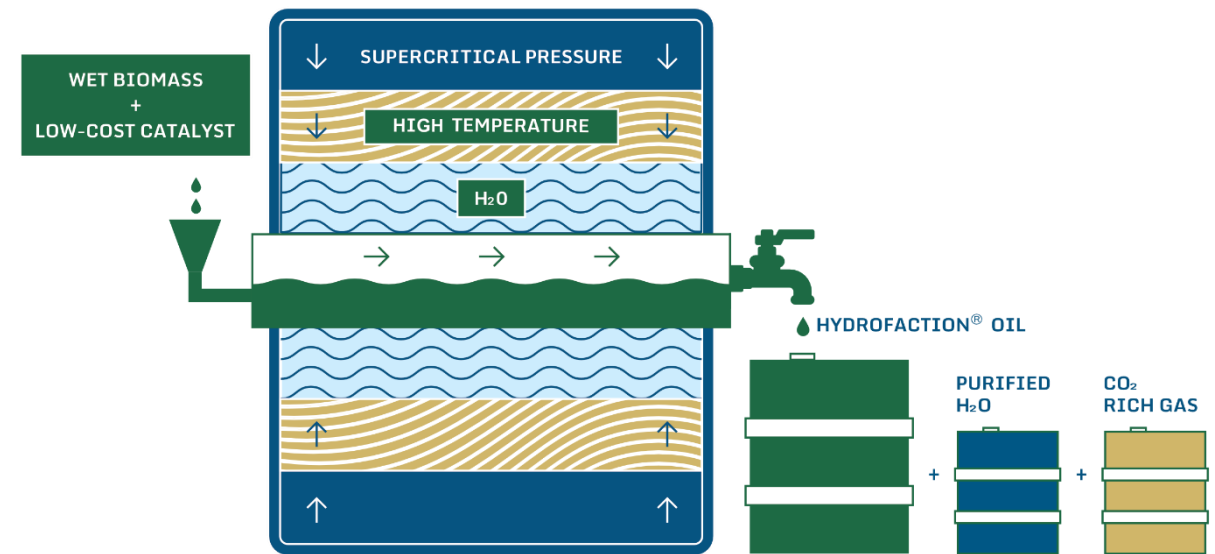
- Hydrofaction[®] achieves an industry-leading 45% biomass-to-oil conversion on a mass basis, and up to 85% of the biomass input energy is recovered in the biocrude
- Hydrofaction[®] biocrude similarities to fossil crude means less refining is required
- Makes use of existing petroleum infrastructure
- Ideally suited for multiple types of wet waste feedstocks, as no drying is required
- Addresses key issues with sustainable feedstocks (fuel versus food; land use change; biodiversity)
- Pathway to carbon negative liquid long-haul transport fuels



Hydrofaction®

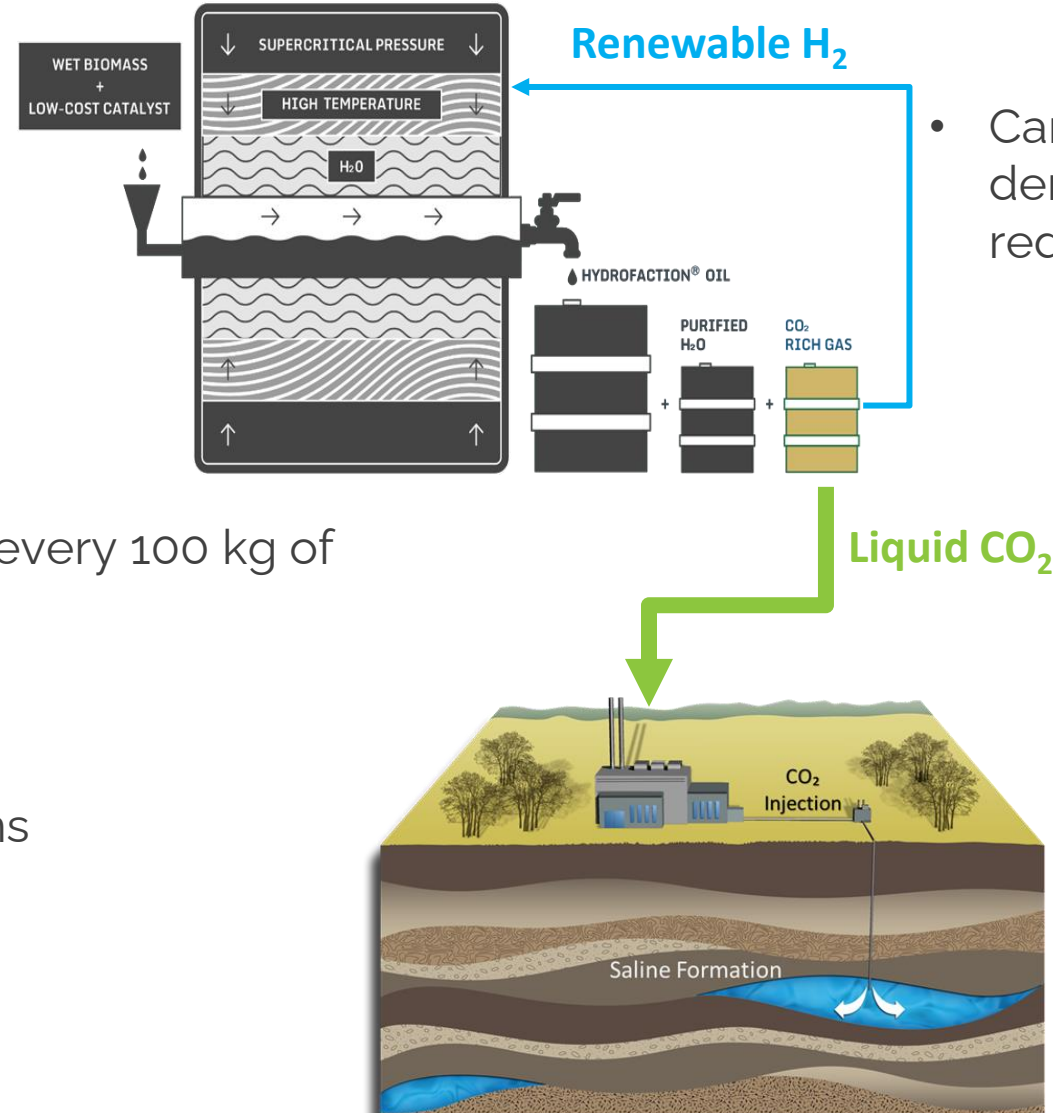
- Proven and optimized hydrothermal liquefaction (HTL) for higher yields
- Supercritical chemistry (~400°C and ~330 bar)
- High energy efficiency (no pre-drying) and highest biomass conversion in the market
- Hydrofaction® Oil has:
 - Low oxygen content
 - High thermal stability
 - High energy density (close to crude oil)
- Ultra Low-Carbon fuels with potential to become Carbon Negative through Carbon Capture, Utilization and Storage (CCUS)

Hydrofaction® is a highly optimized version of HTL, with an industry leading feedstock to biocrude conversion rate



Byproducts: Renewable H₂ & Liquid CO₂

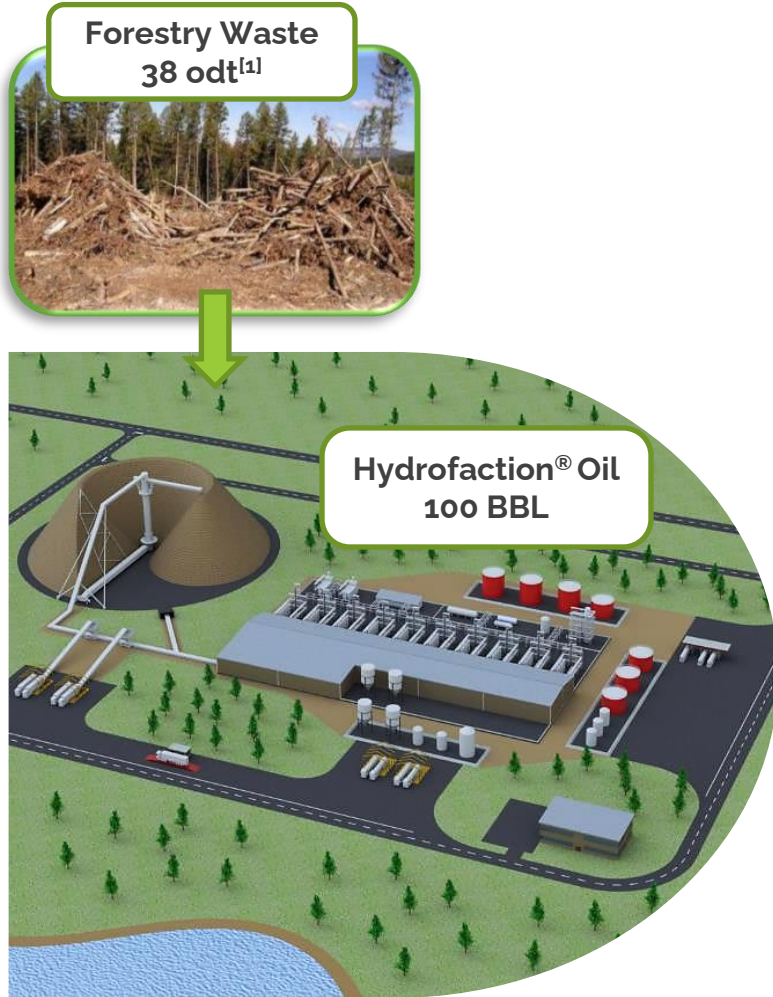
Hydrofaction[®] produces renewable H₂, which can be used in upgrading or sold, and liquid CO₂, for use in industry or permanent sequestration



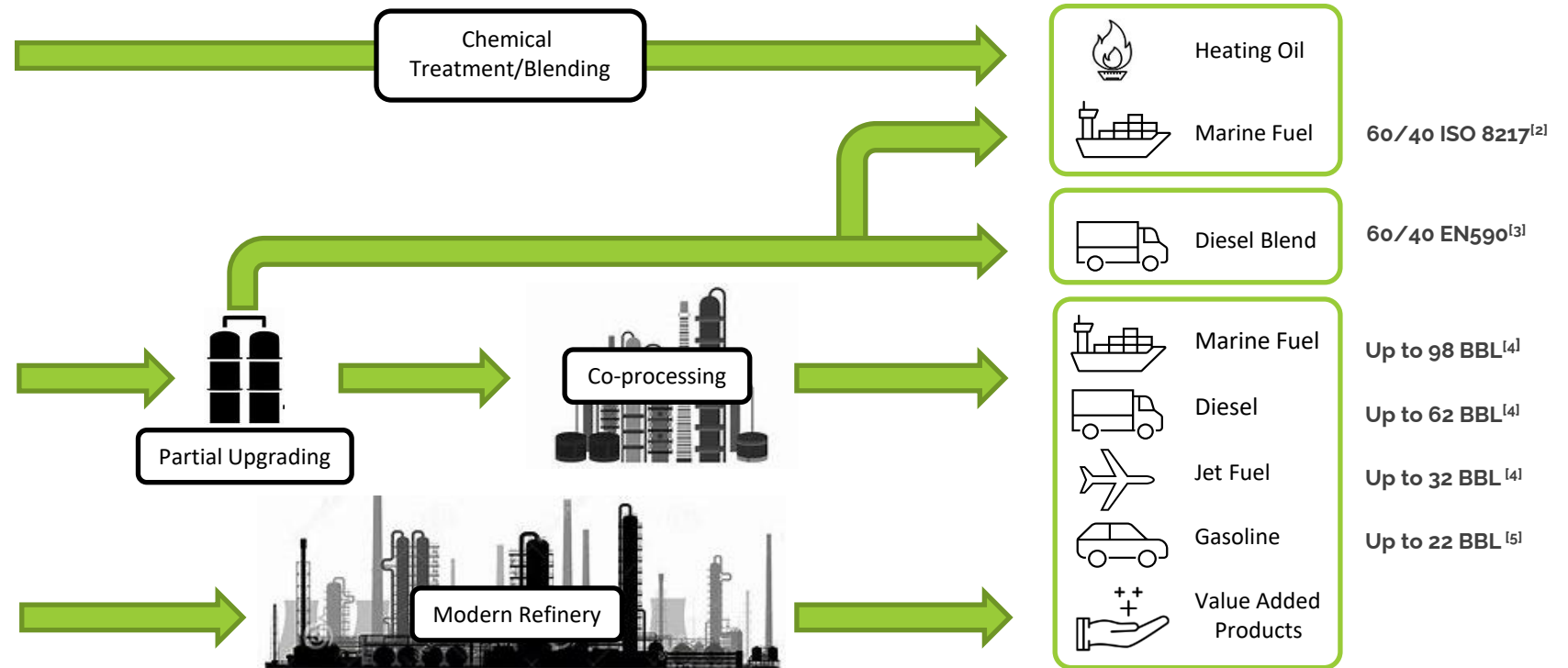
- Can support upgrading demands to further reduce CI score

- Production: 80-90 kg of liquid CO₂ from every 100 kg of Hydrofaction[®] Oil produced
- Potential markets:
 1. permanently sequestered
 2. used to offset existing consumptions
 3. used in the production of e-fuels

Hydrofaction[®] Oil to Fuels



Hydrofaction[®] Oil Pathways To Market



[1] Dry forestry waste to show yield. The process does not require drying

[2] 60 vol% blend of partially upgraded Hydrofaction[®] Oil and 40 vol% RMG 180 marine fuel oil meets ISO 8217 specification

[3] 60 vol% blend of Hydrofaction[®] renewable diesel fraction with 40 vol% fossil diesel meets EN590 ultra-low sulfur diesel specification

[4] Maximum upgrading scenarios for producing marine biofuels, renewable diesel, and jet fuel in various proportions

[5] Gasoline as a secondary fuel product in some of the scenarios with production ranging from 12 BBL to 22 BBL

Derived from forestry residue

Test	Method	Result
Water Content	ASTM D4377 (Mod)	0.18 wt.%
Ash	ASTM D482 (Mod)	0.1 wt.%
Micro carbon residue	ASTM D4530	17.08 wt.%
TAN	ASTM D664A	33.19 mg KOH/g oil
High Heating Value - HHV [daf*]	ASTM D240	38.14 MJ/Kg
Density @ 15.6°C	ASTM D4052	1043 kg/m ³
Kinematic Viscosity @ 40°C	ASTM D445	772.6 cSt
Elemental analysis (daf)		
Carbon	ASTM D5291	80.90 wt.%
Hydrogen	ASTM D5291	9.15 wt.%
Nitrogen	ASTM D5291	0.25 wt.%
Sulfur	ASTM D1552	146 ppm
Oxygen	By difference	9.69 wt.%
H/C	Calculated	1.35 molar ratio
Pour point	ASTM D97	-33 °C
Flash Point	ASTM D3828B	74 °C
Fuel fractions		
Naphtha (IBP-190°C)	ASTM D7169	5.9 %
Jet fuel fraction (190–260°C)	ASTM D7169	11.3 %
Heavy middle distillates (260–343°C)	ASTM D7169	23.3 %
Heavy gas oils (343-550°C)	ASTM D7169	39.9 %
Residue (550+)	ASTM D7169	19.5 %

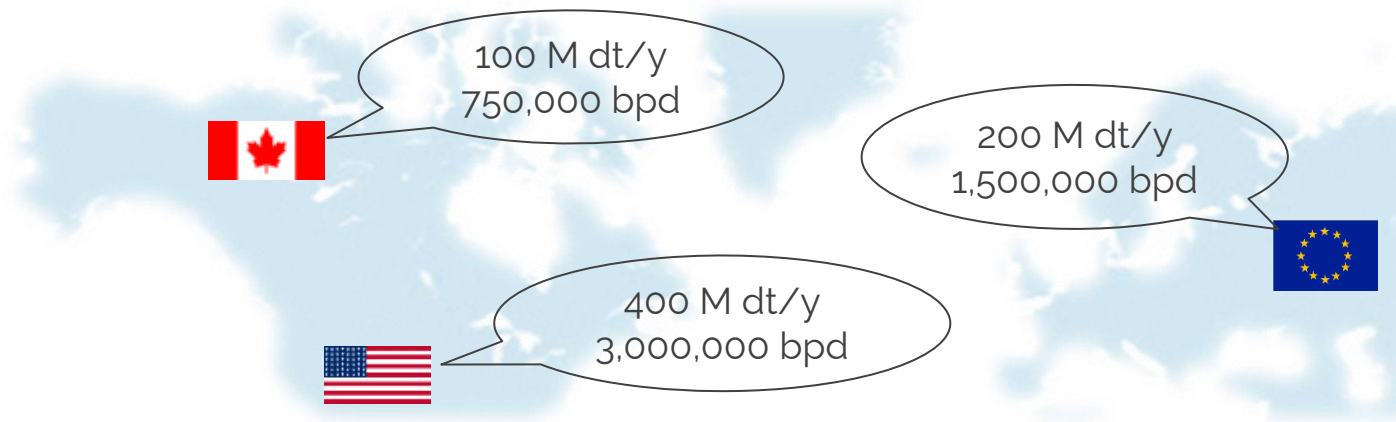
* daf: dry ash free



Global Hydrofaction[®] Potential

Estimated global residual biomass availability:

1.9B dry tonnes (dt) annually of non-food, non-merchantable, forestry and agriculture biomass residues...



7,000

Hydrofaction[®] plants
could be built

14M bpd

Hydrofaction[®] Oil
could be produced

19%

of 2019 Global Oil Demand

~15%

of the annual reduction target
for 2030 global GHG
emissions could be achieved

1. US Dept. of Energy, 2016, "2016 Billion-ton report", https://www.energy.gov/sites/default/files/2016/12/f34/2016_billion_ton_report_12.2.16_0.pdf
2. NRCAN, 2010, "Canada Report on Bioenergy", <http://www.cancarb.ca/pdfs/pubs/NRCAN%20canada-report-on-bioenergy-2010-sept-15-2010.pdf>
3. EC Directorate General for Energy Directorate C1 – Renewables and CCS Policy, 2017, "Sustainable and optimal use of biomass for energy in the EU beyond 2020", https://energy.ec.europa.eu/system/files/2017-06/biosustain_annexes_final_0.pdf
4. IEA, 2010, "Sustainable Production of Second-Generation Biofuels", <https://www.oecd.org/berlin/44567743.pdf>

5. IEA, 2021, "Net Zero by 2050: A roadmap for the global energy sector.", <https://www.iea.org/reports/net-zero-by-2050>
6. UN Environment, Emissions Gap Report 2022, <https://www.unep.org/resources/emissions-gap-report-2022>
7. Global GHG emissions reductions assume an annual reduction of 15 GtCO₂e is required to limit global warming to 2 °C by 2030



Clean Fuel Regulations (**CFS**)

Goal: Reduce the carbon intensity of fuels used in Canada by ~15% by 2030.

British Columbia-Low Carbon Fuel Standard (**BC-LCFS**)

Goal: Reduce the carbon intensity of fuels used in British Columbia by 30% by 2030.



Renewable Fuel Standard (**RFS₂**)

Goal: Increase the volume of renewable fuel required to be blended into transportation fuels

California Low Carbon Fuel Standard (**LCFS**)

Goal: Reduce the carbon intensity of transportation fuel pool in California by at least 20% by 2030

Oregon Clean Fuels Program (**CFP**)

Goal: Reduce the carbon intensity of transportation fuel pool in Oregon by 25% by 2035



Renewable Energy – Recast to 2030 (**RED II**)

Overall target for Renewable Energy Sources consumption by 2030 has been raised to 32%. Member states must supply at least 14% of road and rail transport energy as renewable. Advanced biofuels qualify for twice the incentives

Hydrofaction[®] maximizes North American and European incentives for low-carbon intensity transport fuels

Incentives improve project economics bridging the time required for Hydrofaction[®] to become fully optimized leading to reduced cost of production

Milestones



2011
Dr. Steen Iversen, and Perry Toms, established Steeper Energy



2016
5000 operating hours reached at CBS; Hydrofaction® Oil production proven to be repeatable and reliable



2017-2019
CBS undergoes first upgrades and optimizations



2018-2019
Upgrading of Hydrofaction® Oil to on-spec diesel and marine fuel achieved; co-processing routes externally validated



2020
Advanced Biofuels Center (ABC) established in Calgary, Canada for demonstrating pathways to finished fuels with select commercial end users



2020-2021
CBS undergoes reactor upgrade. Proprietary pump is commissioned



2013
Steeper Energy's Continuous Bench Scale (CBS) pilot plant installed at the Aalborg University, DK



2016-2017
Silva Green Fuel (Statkraft and Södra JV) licenses Hydrofaction® to build 30 BPD industrial-scale demonstration plant in Tofte, Norway as a precursor to a 2000 BPD plant



2018-2020
Steeper and SGF advance the design of sub-systems, contract key suppliers and begin construction of industrial-scale Demo Plant



November 2021
Commissioning and start-up of Silva Green Fuel industrial-scale Demo Plant



January 2023
Steeper Energy enters agreement with Topsoe to introduce complete waste-to-biofuel solution



2023
Commercial stakeholder MOUs

Growing IP portfolio of 25 patent families, with over 200 patents granted internationally

Silva Green Fuel carried out extensive diligence on over 40 technology pathways and licensed Steeper's Hydrofaction® in 2017

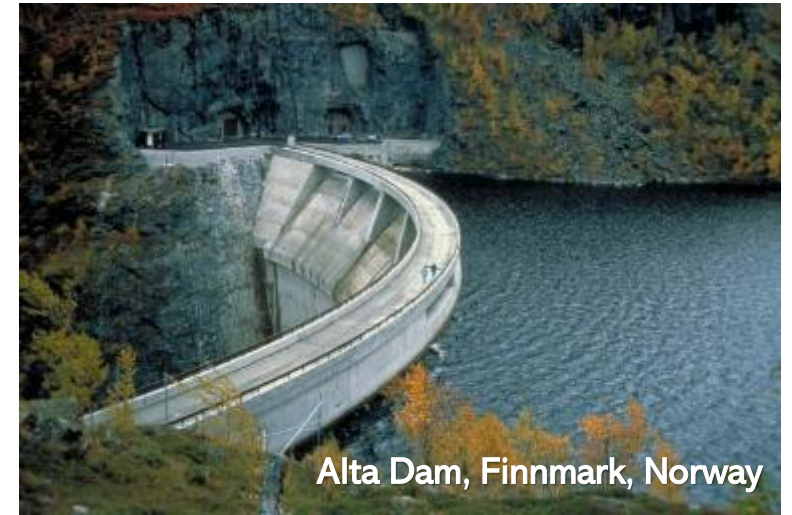
Silva Green Fuel is a partnership between Statkraft A/S and Södra AB to produce and supply advanced biofuels.



- Europe's largest generator of renewable energy
- Owns/operates a diverse portfolio of hydro, wind, gas, district heating, biomass, and solar assets
- Largest hydropower electricity producer in Europe
- Leading producer of power from wind in Northern Europe



- A Swedish forestry cooperative with over 53,000 forest owners
- Total 2.8 million hectares of forest land
- Producer of:
 - Sawn and planed timber goods
 - Paper pulp and packaging
 - Renewable electricity and,
 - Biofuel



Commercial Demonstration



Hydrofaction®
SGF Demonstration Plant
Tofte, Norway



Strategic Partner

Silva Green Fuel, Steeper's first commercial licensee, chose to invest in Hydrofaction® after extensive diligence on ~40 competing technologies



Phase I: Demo Plant

A € 50M Demo Plant with capacity of 30 BPD converting forestry residues to renewable biocrude



Engineering Verification

We are currently in the process of having Steeper's commercial plant capital costs and engineering verified by an engineering firm



Operations

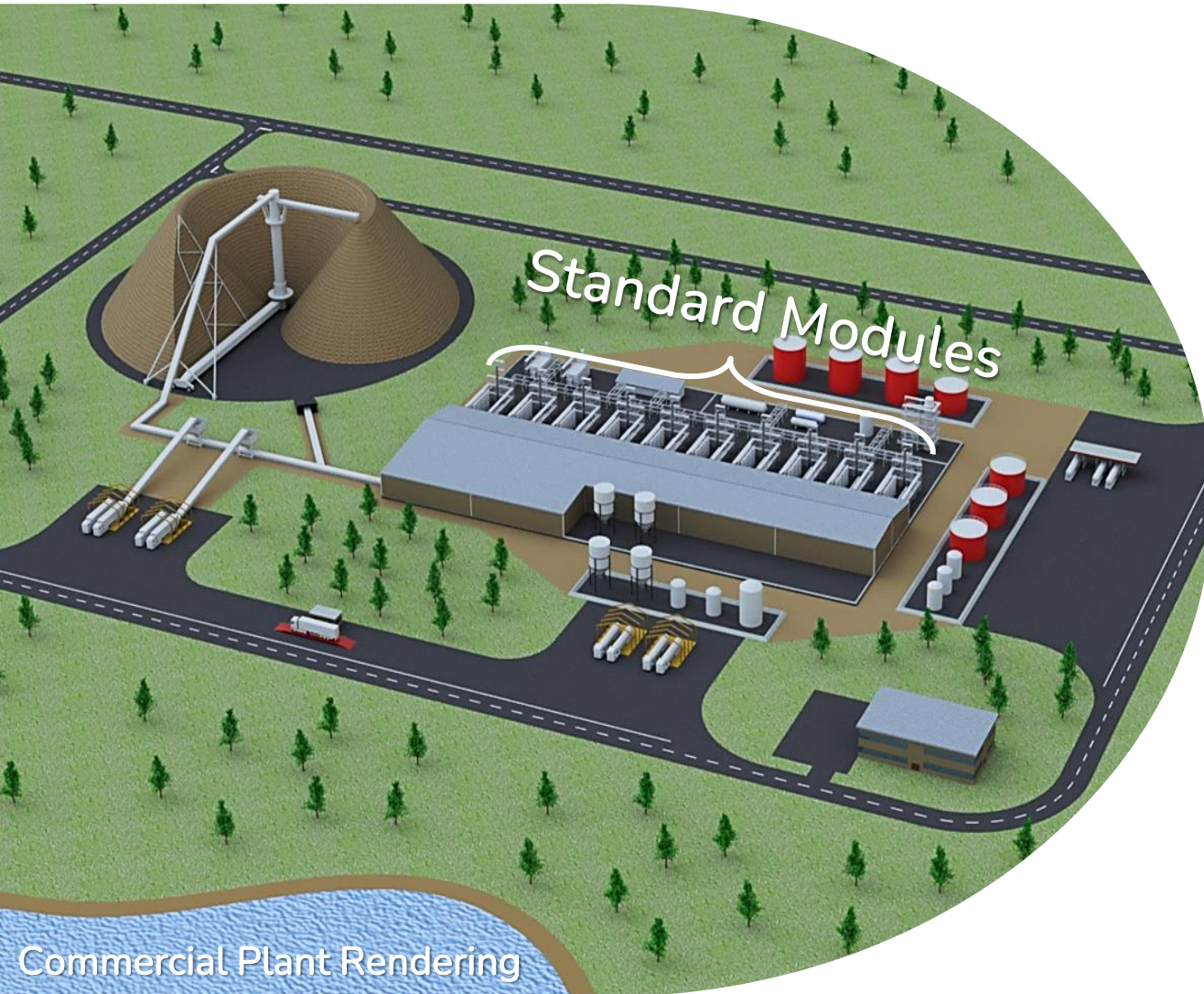
Construction of Phase I completed in 2021 and startup in progress with operation through 2023. Phase II to follow



Phase II: Commercial Plant

Average production of 2,000 BPD or 125,000 Fuel Tonnes per Annum to be built adjacent to the Demo Plant

Standard Modular Plant Design



Hydrofession® plants are designed on a philosophy of standard capacity modules which are replicated to the appropriate plant scale

This design methodology delivers consistency, replicability, and redundancy, which leads to high availability

Controlled, repeatable engineering, manufacturing, and regulatory approval processes leads to rapid plant deployment

Modular design reduces on-site construction costs and moves sub-components to a controlled manufacturing environment, which yields quality, cost-effectiveness, and reduced risk

Biocrude to Finished Fuels

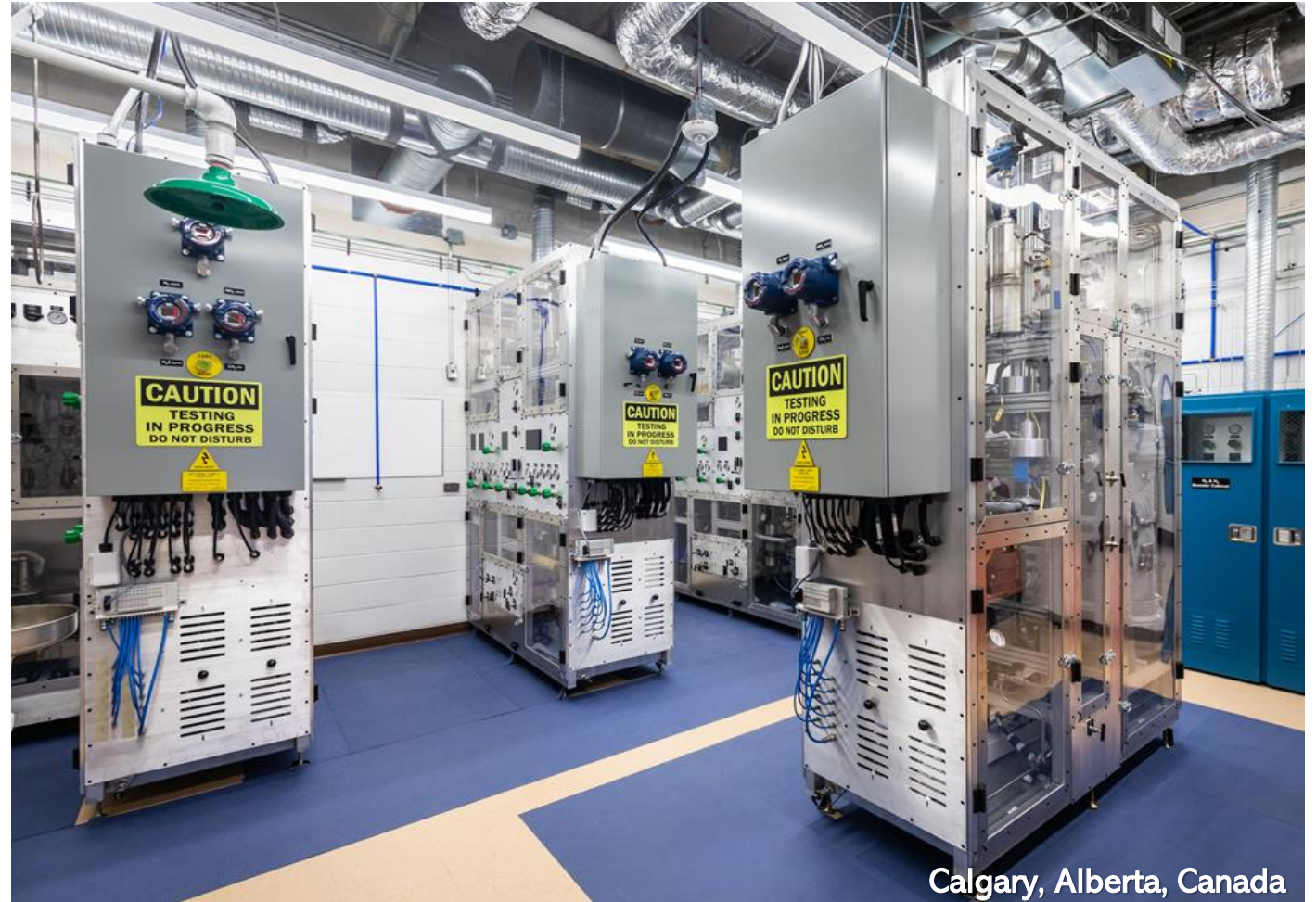


In addition to biocrude production, Steeper is advancing upgrading and co-processing pathways to ensure Hydrofaction[®] Oil's integration into existing energy infrastructure

Defining the value of Hydrofaction[®] Oil

- Advancing biocrude stability, blending, and compatibility
- Utilizing in-situ renewable H₂
- Demonstrating refinery integration
- Developing techno-economic pathways to renewable fuels
- Delivering flexibility in commercial design for Hydrofaction[®] licensees

This highly specialized laboratory is enhancing Steeper's upgrading and refinery co-processing capabilities



Calgary, Alberta, Canada

Hydrofaction[®] Oil: Upgrading

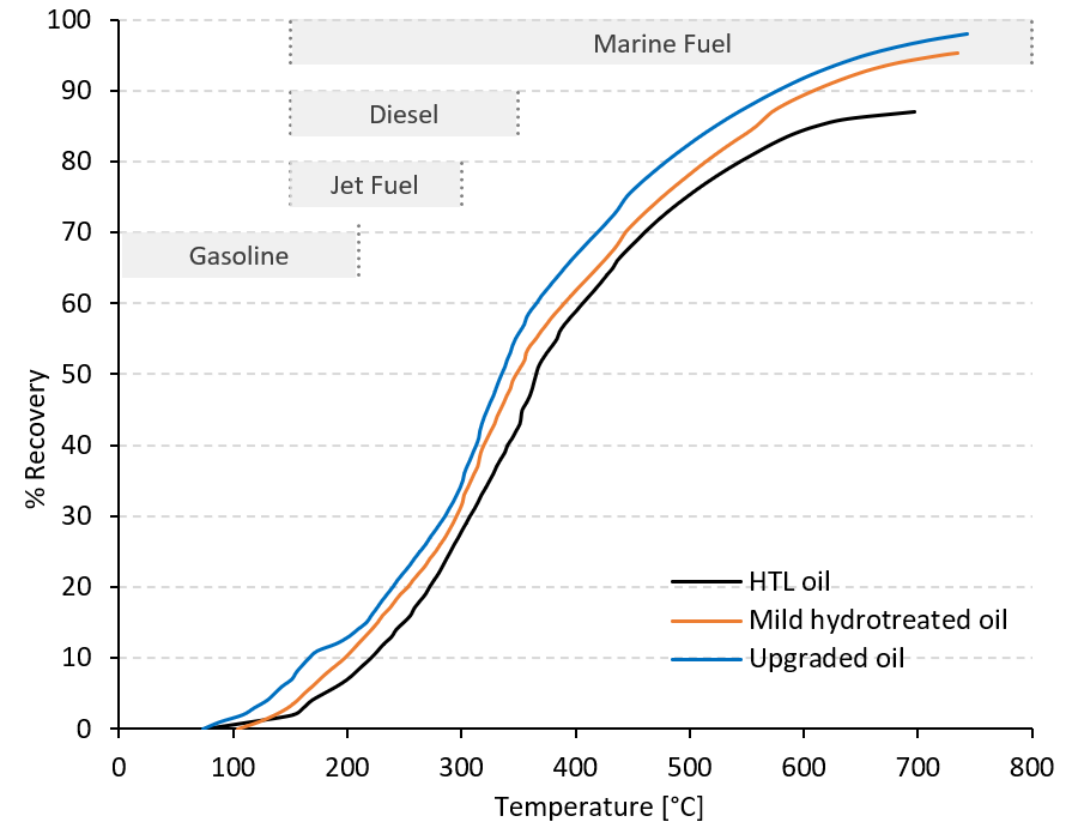
The physicochemical properties of the Hydrofaction[®] Oil significantly improved after hydrotreating using **commercial sulphided catalysts**.

Test	Method	HTL oil	Mild hydrotreated oil	Upgraded oil
Campaigns results				
Water yield [wt.%]	-	-	5.8	1.2
Gas yield [wt.%]	-	-	3.4	1.0
Liquid hydrocarbon yield [wt.%]	-	-	90.8	97.8
Hydrogen consumption [wt.%]	-	-	1.4	0.5
Product characterization				
Nitrogen [wt.%, daf]	ASTM D4629	0.25	0.19	0.13
Sulfur [wt.%, daf]	ASTM D5453, D6667	0.02	0.02	0.01
Oxygen [wt.%, daf]	by difference	9.69	3.89	1.68
H/C Molar Ratio	calculated	1.35	1.51	1.56
HHV - daf [MJ/kg]	ASTM D240	38	43	44
Ash [ppm]	ASTM D482 (Mod)	915	689	<10
Micro carbon residue [wt.%]	ASTM D4530	17	9.18	6.80
Water Content [wt.%]	ASTM D4377 (Mod)	0.18	0.06	<0.1
Density @ 25°C [kg/m ³]	ASTM D4052/D5002	1036	966	939
Viscosity @ 25°C [cSt]	ASTM D445	4458	181	37
TAN [mg KOH/g oil]	ASTM D664A	32	<0.1	<0.1

*daf: dry ash free

Mild hydrotreated oil: 330°C, 100 bar, 0.5 h⁻¹ (WHSV), 1000 v/v (H₂-to-oil ratio)

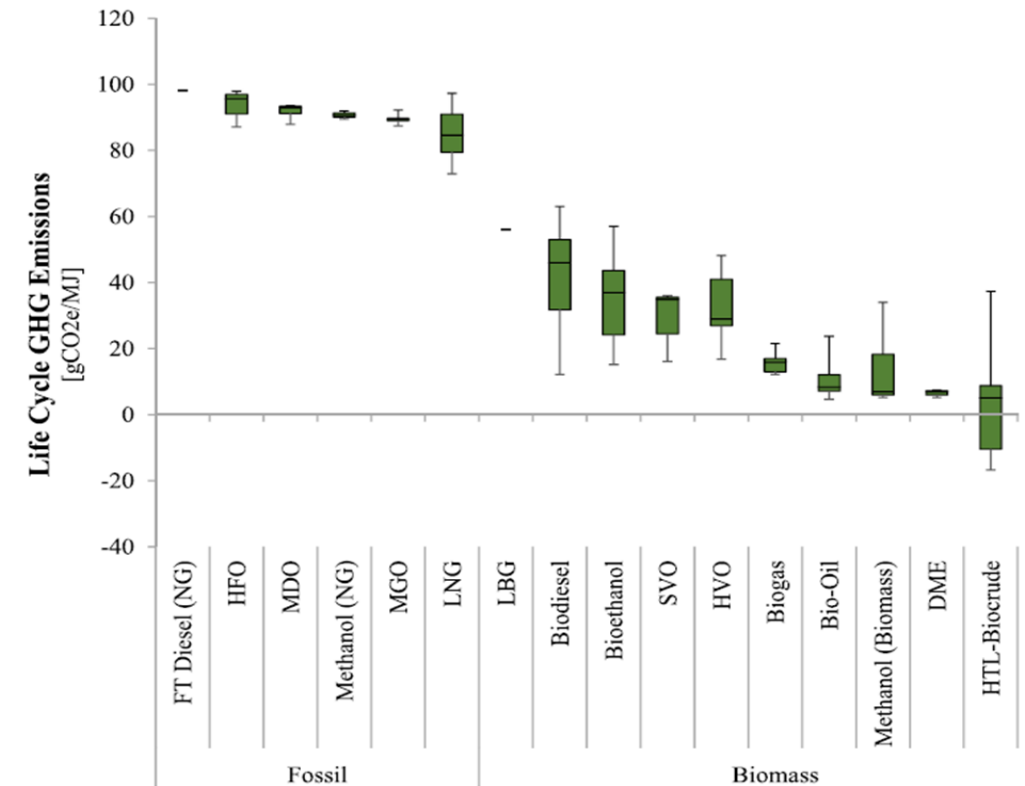
Upgraded oil: 370°C, 100 bar, 0.5 h⁻¹ (WHSV), 1000 v/v (H₂-to-oil ratio)



Boiling point distribution curves determined by simulated distillation for renewable crude oil, partial upgraded and upgraded oil.

A 2000 BPD Hydrofaction[®] Plant reduces 437,000 t CO₂e annually.

Emissions Source	gCO ₂ e/MJ
Biofuel preparation, utilities, catalysts, transport	10
Energy Usage	4
Drop-in Biofuel End-Use Combustion	3
Waste wood combustion avoidance	-17
Project Emissions	0
Baseline Fossil Fuel Comparator	94
GHG Emissions Reduction	100%
Further Reduction Potential	gCO ₂ e/MJ
CO ₂ Sequestration, Low Grade Heat Production, and Other Optimisations	-30
Total GHG Emissions Reductions possibilities	>132%

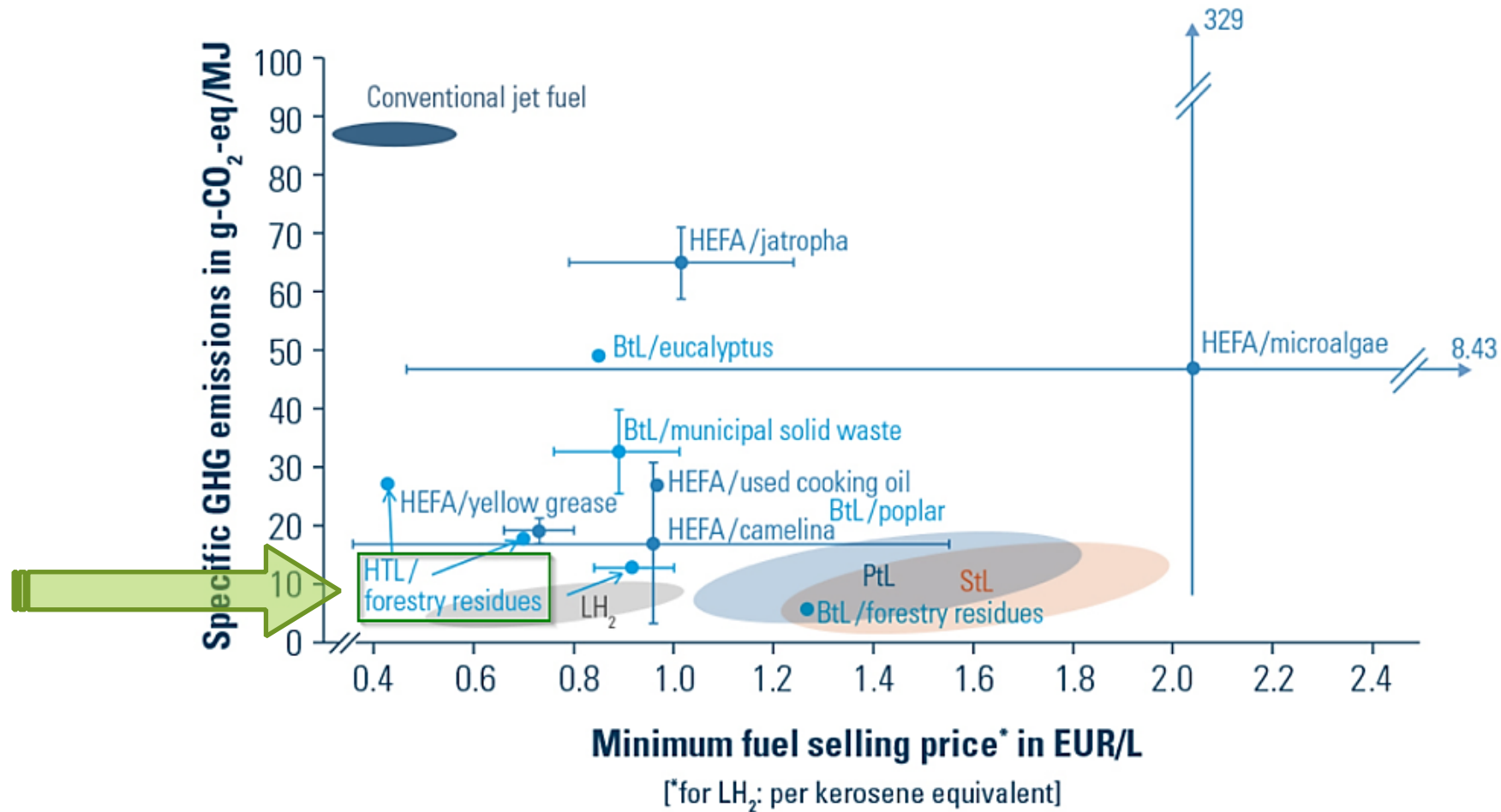


Source: Foretich, Anthony, et al. "Challenges and opportunities for alternative fuels in the maritime sector." Maritime Transport Research, vol 2, Aug. 2021.

More than 100% GHG reductions possible through CCUS and Power-to-X using liquid CO₂ from process

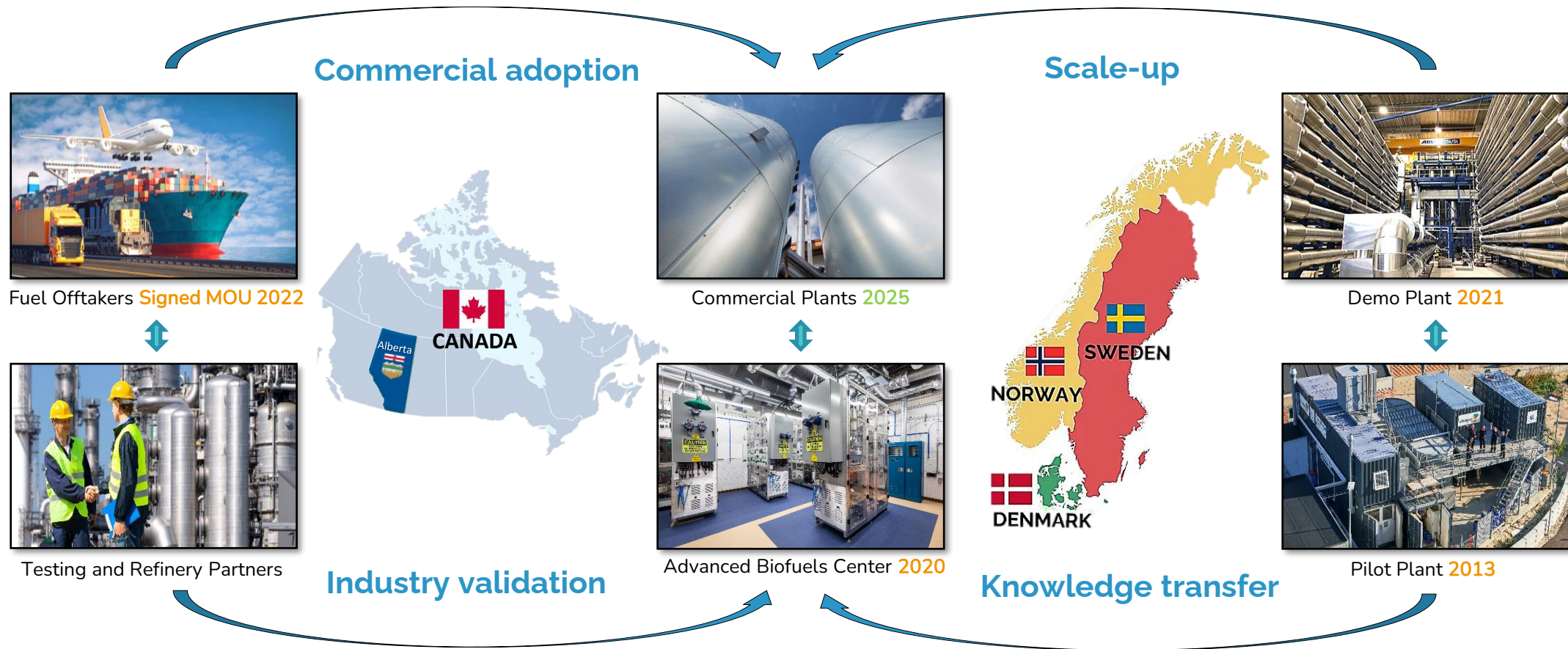
Carbon Efficient and Cost Competitive

Hydrofaction[®] is a carbon-efficient and cost-competitive advanced biofuels solution for producing globally relevant volumes of heavy and long-haul transport fuels



Source: <https://www.bauhaus-luftfahrt.net/en/tothema/hy-shair/>

Global Leader in HTL Technology



Leveraging Pilot, Demo, and HTL Expertise, Steeper brings a solution that stimulates cross-industry collaboration, job creation, and cleantech growth

- TOM Capital (TOM) is the majority shareholder of Steeper Energy and is a Calgary-based Private Equity firm. TOM has been an investor in Steeper Energy since 2012
- TOM Capital owns businesses in Canada and the US spanning manufacturing, technology, consumer products, real estate development, retail real estate, and financial services
- TOM's founders have been involved in creating businesses that in a number of instances have become highly valued public companies. TOM Capital has a long-term investment horizon with a focus on driving significant enterprise value appreciation over time
- The team at TOM is focused on the most strategic dimensions of portfolio companies. Steeper's president and two board members are staff of TOM. Other TOM employees participate in strategic initiatives as required



TOM Capital Management Inc.

Steeper Energy has arguably the most advanced HTL-based renewable fuels technology and is positioned for rapid commercialization and tremendous growth

- Industrial Demo Plant
- Pilot Plant >8000 hours
- Robust project pipeline
- Capital costs and engineering in the process of being verified

Commercial Readiness



- Feedstock flexible
- Common catalysts
- Redundancy in design

Simplicity & Robustness



- 45% conversion on a mass basis
- Up to 85% energy recovery. No pre-drying required
- High heating value and low oxygen content

Process Efficiency



- Hydrofaction® Oil is chemically similar to petroleum
- Compatible with refineries and existing infrastructure

Petro-equivalency



- Clean discharge water
- Organics recycling maximizes yield and minimizes waste

Minimal Effluent & Waste Streams



- Process gas rich in H₂ and CO₂
- Renewable H₂ export possible
- Biogenic CO₂ capture-ready

Renewable H₂ & CO₂ Capture



- >200 patents granted
- >25 patent families
- Extensive know-how spanning Hydrofaction® and upgrading

Strong IP Protection



- Carbon-negative technology
- Access to regulatory incentives

Sustainability

